



Octave Labs

Sample 809-112524-013

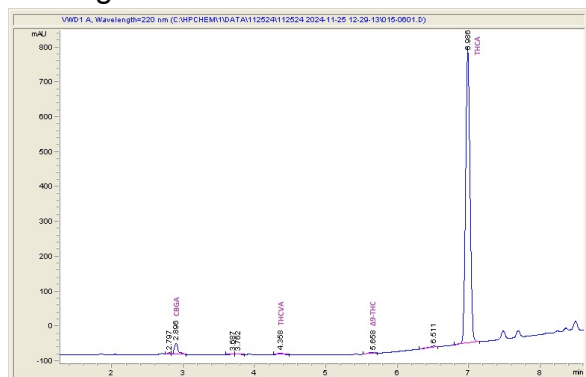
Cereal Milk

Sample Submitted: 11-25-2024; Report Date: 11-29-2024

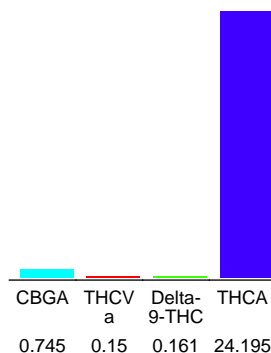
Cereal Milk

Plant Material: Hemp Flower

Chromatogram



Cannabinoid Profile



Cannabinoid Profile by HPLC

0.16%

Delta-9-THC

0.00%

CBD

25.25%

Total Cannabinoids

Cannabinoid	% wt	mg/g
CBGA	0.745	7.45
THCVa	0.15	1.5
Delta-9-THC	0.161	1.61
THCA	24.2	241.95
Total Cannabinoids	25.25	252.5
Calculated Total THC	21.38	213.80
Calculated CBD Yield	0.00	0.00
Calculated Total THC = Delta-9-THC + 0.877 * THCA		
Calculated Maximum CBD Yield = CBD + 0.877 * CBDA		

Marin Analytics, LLC

250 Bel Marin Keys Blvd, Suite D4
Novato, CA 94949

833-321-TEST / info@marinanalytics.com

Mike Clemmons
Lab Manager

This sample has been tested by Marin Analytics, LLC using valid testing methodologies and a quality system. Values reported relate only to the sample tested. Marin Analytics, LLC makes no claims as to the efficacy, safety, or other risks associated with any detected or non-detected levels of any compounds reported herein. This Certificate shall not be reproduced except in full without the written approval of Marin Analytics, LLC. Copyright 2023 Marin Analytics, LLC All Rights Reserved.

Sample Name: CEREAL MILK	License: AG-R1066923IHH
Tested for: Octave Labs	Date Sampled: 11/19/24 18:00
R&D Testing	Date Accepted: 11/25/24
Laboratory ID: 24K0118-05	Strain: CEREAL MILK
Matrix: Useable Marijuana	Sample Metrc ID: N/A
Lot # N/A	Batch RFID: N/A
	Batch Size: N/A

Terpene Analysis

Date Extracted: 11/27/24			Analysis Method: Terpenes by GC/FID		
Date Analyzed: 11/27/24					
Analyte	Result (%)	LOQ	Analyte	Result	LOQ
alpha Pinene	0.0565	0.0088	beta Myrcene	0.2610	0.0088
alpha Phellandrene	< LOQ	0.0088	3-Carene	< LOQ	0.0088
alpha Terpinene	< LOQ	0.0088	Limonene	0.5806	0.0088
Terpinolene	< LOQ	0.0088	Linalool	0.2649	0.0088
Fenchol	0.0449	0.0088	Borneol	0.0112	0.0088
Terpineol	0.0512	0.0088	Geraniol	< LOQ	0.0088
alpha Humulene	0.1622	0.0088	beta Caryophyllene	0.5363	0.0088
(-)-Caryophyllene Oxide	< LOQ	0.0088	(-)-alpha Bisabolol	< LOQ	0.0088
Camphene	0.0145	0.0088	beta Pinene	0.1140	0.0088
Ocimene	< LOQ	0.0088	Sabinene	< LOQ	0.0088
Camphor	< LOQ	0.0088	Isoborneol	< LOQ	0.0088
Menthol	< LOQ	0.0088	alpha Cedrene	< LOQ	0.0088
Nerolidol	0.0317	0.0088	(+)-Pulegone	< LOQ	0.0088
Eucalyptol	< LOQ	0.0088	p-Cymene	< LOQ	0.0088
(-)-Isopulegol	< LOQ	0.0088	Geranyl Acetate	< LOQ	0.0088
Guaiol	< LOQ	0.0088	Valencene	< LOQ	0.0088
Phytol	< LOQ	0.0088	Citronellol	< LOQ	0.0088
gamma Terpinene	< LOQ	0.0088	Farnesene	0.1359	0.0088
Fenchone	< LOQ	0.0088	Nerol	< LOQ	0.0088
Sabinene Hydrate	< LOQ	0.0088	(+)-Cedrol	< LOQ	0.0088
			Total Terpenes	2.265 %	

<LOQ - Results below the Limit of Quantitation
 Terpene Analysis is not ORELAP Accredited.


 Breeanna Hamilton
 Lab Director

These results relate only to the sample included on this report. The report may not be reproduced except in full, without the written permission of SC Laboratories. Samples tested in accordance with Oregon Administrative Rules, TNI 2016 Standard and SC Laboratories quality assurance plan unless otherwise noted.

Sample Name: **CEREAL MILK**

License: **AG-R1066923IHH**

Tested for: **Octave Labs**

Date Sampled: **11/19/24 18:00**

R&D Testing

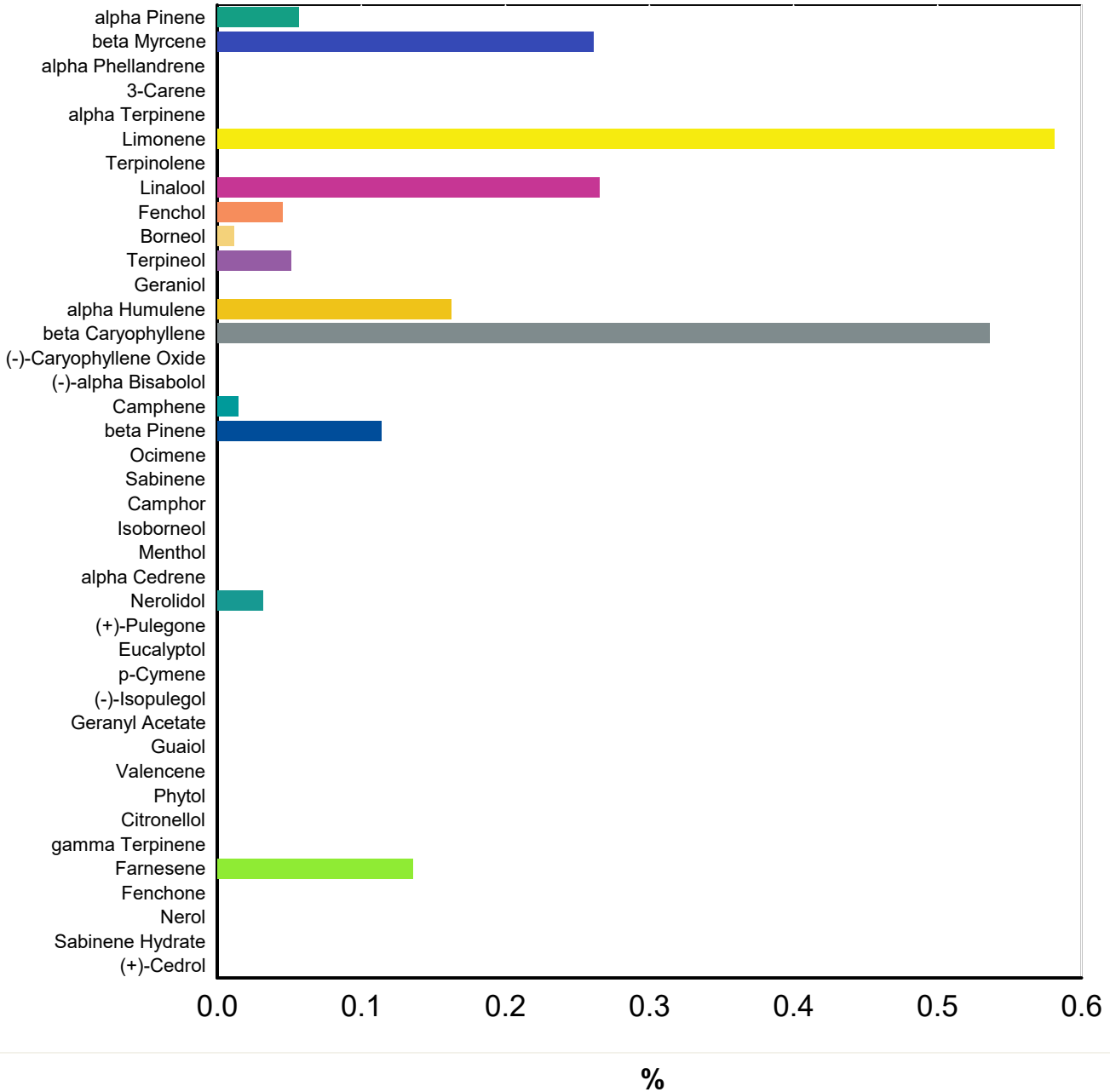
Date Accepted: **11/25/24 09:43**

Laboratory ID: **24K0118-05**

Matrix: **Useable Marijuana**

Client/Metric ID: **N/A**

Terpene Profile




 Breeanna Hamilton
 Lab Director

These results relate only to the sample included on this report. The report may not be reproduced except in full, without the written permission of SC Laboratories. Samples tested in accordance with Oregon Administrative Rules, TNI 2016 Standard and SC Laboratories quality assurance plan unless otherwise noted.



Analytical Results

SC Laboratories Oregon LLC
ORELAP# 4133/OLCC# 1018619A26E
15865 SW 74th Ave Suite 110, Tigard, OR
503-272-8830
www.sclabs.com

Sample Name: **Homogenized THCA Flower Full Panel**
Tested for: **Octave Labs**
R&D Testing

Laboratory ID: 24K0118-01

Matrix: Useable Marijuana

Sample Metrc ID: N/A

Lot # N/A

Batch RFID: N/A

Batch Size: N/A

Strain: Homogenized THCA Flower

Full Panel
Harvest Date: N/A

License: AG-R1066923IHH

Date Sampled: 11/19/24 18:00

Date Accepted: 11/25/24

Water Activity and Moisture

Analyte	Result	Limit	Units	LOQ	Analyzed	Method
Percent Moisture	10.9	15	%	0.10	12/02/2024	AOAC 966.02
Cannabinoids reported as dry weight (moisture corrected)				Results above the action level are highlighted in red #.		
<LOQ - Results below the Limit of Quantitation						

Breeanna Hamilton
Lab Director

These results relate only to the sample included on this report. The report may not be reproduced except in full, without the written permission of SC Laboratories. Samples tested in accordance with Oregon Administrative Rules, TNI 2016 Standard and SC Laboratories quality assurance plan unless otherwise noted.

Sample Name: **Homogenized THCA Flower Full Panel** License: **AG-R1066923IHH**
 Tested for: **Octave Labs** Date Sampled: **11/19/24 18:00**
R&D Testing Date Accepted: **11/25/24**

Laboratory ID: **24K0118-01** Strain: **Homogenized** Sample Metrc ID: **N/A**
 Matrix: **Useable Marijuana** Batch RFID: **N/A**
 Lot # **N/A** Batch Size: **N/A**

Pesticide Analysis in ppm

Date Extracted: 11/27/24 Analysis Method: SC-OR-ORG-003
 Date Analyzed: 11/28/24 Results above the action levels are highlighted in red #.

Analyte	Result	Action Level	LOQ	Analyte	Result	Action Level	LOQ
Abamectin	< LOQ	0.5	0.24	Acephate	< LOQ	0.4	0.20
Acequinocyl	< LOQ	2	0.98	Acetamiprid	< LOQ	0.2	0.10
Aldicarb	< LOQ	0.4	0.20	Azoxystrobin	< LOQ	0.2	0.10
Bifenazate	< LOQ	0.2	0.10	Bifenthrin	< LOQ	0.2	0.10
Boscalid	< LOQ	0.4	0.20	Carbaryl	< LOQ	0.2	0.10
Carbofuran	< LOQ	0.2	0.10	Chlorantraniliprole	< LOQ	0.2	0.10
Chlorfenapyr	< LOQ	1	0.49	Chlorpyrifos	< LOQ	0.2	0.10
Clofentezine	< LOQ	0.2	0.10	Cyfluthrin	< LOQ	1	0.49
Cypermethrin	< LOQ	1	0.49	Daminozide	< LOQ	1	0.49
DDVP (Dichlorvos)	< LOQ	1	0.49	Diazinon	< LOQ	0.2	0.10
Dimethoate	< LOQ	0.2	0.10	Ethoprophos	< LOQ	0.2	0.10
Etofenprox	< LOQ	0.4	0.20	Etoxazole	< LOQ	0.2	0.10
Fenoxycarb	< LOQ	0.2	0.10	Fenpyroximate	< LOQ	0.4	0.20
Fipronil	< LOQ	0.4	0.20	Flonicamid	< LOQ	1	0.49
Fludioxonil	< LOQ	0.4	0.20	Hexythiazox	< LOQ	1	0.49
Imazalil	< LOQ	0.2	0.10	Imidacloprid	< LOQ	0.4	0.20
Kresoxim-methyl	< LOQ	0.4	0.20	Malathion	< LOQ	0.2	0.10
Metalaxyl	< LOQ	0.2	0.10	Methiocarb	< LOQ	0.2	0.10
Methomyl	< LOQ	0.4	0.20	Methyl parathion	< LOQ	0.2	0.10
MGK-264	< LOQ	0.2	0.10	Myclobutanil	< LOQ	0.2	0.10
Naled	< LOQ	0.5	0.24	Oxamyl	< LOQ	1	0.49
Paclobutrazol	< LOQ	0.4	0.20	Permethrins (total)	< LOQ	0.2	0.10
Phosmet	< LOQ	0.2	0.10	Piperonyl butoxide	< LOQ	2	0.49
Prallethrin	< LOQ	0.2	0.10	Propiconazole	< LOQ	0.4	0.20
Propoxur	< LOQ	0.2	0.10	Pyrethrins (total)	< LOQ	1	0.49
Pyridaben	< LOQ	0.2	0.10	Spinosad	< LOQ	0.2	0.10
Spiromesifen	< LOQ	0.2	0.10	Spirotetramat	< LOQ	0.2	0.10
Spiroxamine	< LOQ	0.4	0.20	Tebuconazole	< LOQ	0.4	0.20
Thiacloprid	< LOQ	0.2	0.10	Thiamethoxam	< LOQ	0.2	0.10
Trifloxystrobin	< LOQ	0.2	0.10				

<LOQ - Results below the Limit of Quantitation


 Breeanna Hamilton
 Lab Director

These results relate only to the sample included on this report. The report may not be reproduced except in full, without the written permission of SC Laboratories. Samples tested in accordance with Oregon Administrative Rules, TNI 2016 Standard and SC Laboratories quality assurance plan unless otherwise noted.



Analytical Results

SC Laboratories Oregon LLC
ORELAP# 4133/OLCC# 1018619A26E
15865 SW 74th Ave Suite 110, Tigard, OR
503-272-8830
www.sclabs.com

Sample Name: **Homogenized THCA Flower Full Panel**
Tested for: **Octave Labs**
R&D Testing

License: **AG-R1066923IHH**
Date Sampled: **11/19/24 18:00**
Date Accepted: **11/25/24**

Laboratory ID: **24K0118-01** Strain: **Homogenized** Sample Metric ID: **N/A**
Matrix: **Useable Marijuana** Batch RFID: **N/A**
Lot # **N/A** Batch Size: **N/A**

Mycotoxin Analysis by LCMSMS

Date/Time Extracted: **11/27/24 16:00**

Analysis Method/SOP: **SC-OR-ORG-003**

Date/Time Analyzed: **11/28/24**

Results above the action levels are highlighted in **red #**.

Analyte	Result	LOQ	Units	Action Level
Aflatoxin B1	< LOQ	0.005	ppm	0.02
Aflatoxin B2	< LOQ	0.005	ppm	0.02
Aflatoxin G1	< LOQ	0.005	ppm	0.02
Aflatoxin G2	< LOQ	0.005	ppm	0.02
Aflatoxins (Total)	< LOQ	0.005	ppm	0.02
Ochratoxin A	< LOQ	0.01	ppm	0.02



Breeanna Hamilton
Lab Director

These results relate only to the sample included on this report. The report may not be reproduced except in full, without the written permission of SC Laboratories. Samples tested in accordance with Oregon Administrative Rules, TNI 2016 Standard and SC Laboratories quality assurance plan unless otherwise noted.



Analytical Results

SC Laboratories Oregon LLC
ORELAP# 4133/OLCC# 1018619A26E
15865 SW 74th Ave Suite 110, Tigard, OR
503-272-8830
www.sclabs.com

Sample Name: **Homogenized THCA Flower Full Panel** License: **AG-R1066923IHH**
Tested for: **Octave Labs** Date Sampled: **11/19/24 18:00**
R&D Testing Date Accepted: **11/25/24**

Laboratory ID: **24K0118-01** Strain: **Homogenized** Sample Metrc ID: **N/A**
Matrix: **Useable Marijuana** Batch RFID: **N/A**
Lot # **N/A** Batch Size: **N/A**

Microbiological Analysis by qPCR

Date/Time Extracted: **11/26/24 16:40** Analysis Method/SOP: **PathoSEEK qPCR**
Date/Time Analyzed: **11/27/24** Results above the action levels are highlighted in **red #**.

Analyte	Result (Present/Absent)
Salmonella	Absent
Shiga toxin producing E. Coli (STEC)	Absent



Breeanna Hamilton
Lab Director

These results relate only to the sample included on this report. The report may not be reproduced except in full, without the written permission of SC Laboratories. Samples tested in accordance with Oregon Administrative Rules, TNI 2016 Standard and SC Laboratories quality assurance plan unless otherwise noted.



Analytical Results

SC Laboratories Oregon LLC
ORELAP# 4133/OLCC# 1018619A26E
15865 SW 74th Ave Suite 110, Tigard, OR
503-272-8830
www.sclabs.com

Sample Name: **Homogenized THCA Flower Full Panel**
Tested for: **Octave Labs**
R&D Testing

License: **AG-R1066923IHH**
Date Sampled: **11/19/24 18:00**
Date Accepted: **11/25/24**

Laboratory ID: **24K0118-01** Strain: **Homogenized** Sample Metric ID: **N/A**
Matrix: **Useable Marijuana** Batch RFID: **N/A**
Lot # **N/A** Batch Size: **N/A**

Metals Analysis by ICPMS

Date/Time Extracted: **11/26/24 16:07**

Analysis Method/SOP: **AOAC 2013.06**

Date/Time Analyzed: **11/27/24**

Results above the action levels are highlighted in **red #**.

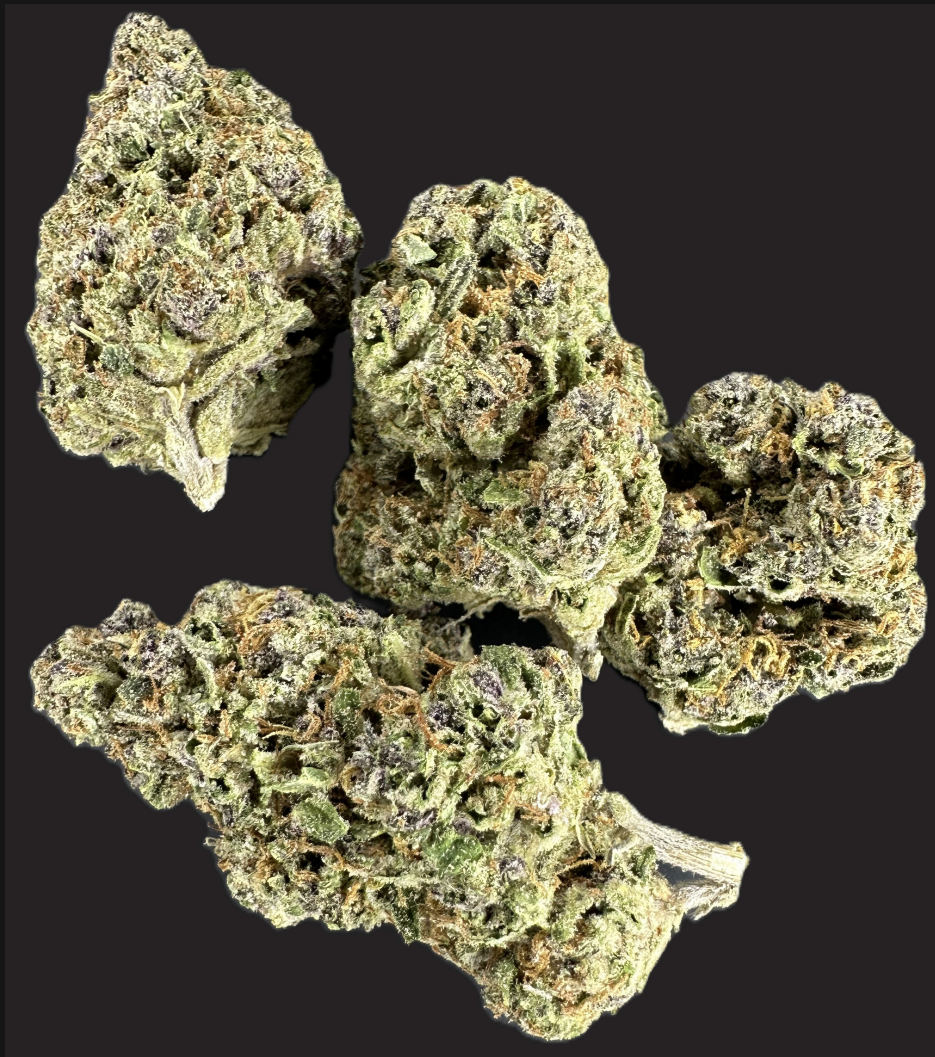
Analyte	Result	LOQ	Units	Action Level
Arsenic (As)	< LOQ	0.099	ug/g	0.2
Cadmium (Cd)	< LOQ	0.099	ug/g	0.2
Lead (Pb)	< LOQ	0.099	ug/g	0.5
Mercury (Hg)	< LOQ	0.050	ug/g	0.1



Breeanna Hamilton
Lab Director

These results relate only to the sample included on this report. The report may not be reproduced except in full, without the written permission of SC Laboratories. Samples tested in accordance with Oregon Administrative Rules, TNI 2016 Standard and SC Laboratories quality assurance plan unless otherwise noted.

CEREAL MILK



CEREAL MILK

